

Construction Clients Group Annual Members Event

Responding to a Major Disaster

Paul Green
Manager Planning and Intelligence / Operations
Auckland CDEM



About Us



Established 1 July 1999 ,
governed by the Civil Defence
and Emergency Management
Act 2002



The Ministry manages and
supports CDEM Groups across
the country



Auckland Council is
made up of 13 Wards

Auckland Civil Defence Emergency Management Group
works closely with its partners to co-ordinate activities related
to hazard and emergency management within the region



Civil Defence and Emergency Management

- New Auckland CDEM Group established Nov 2010
- Auckland Council structure provides strong support and commitment to Civil Defence
- Councils 'go to' department in times of emergency or crisis



Major Disaster Response

Whole of Department activation

Plus Auckland Council Communications and GIS
Departments

Plus 350 trained and engaged ACES

Plus the resources at Councils disposal to support
response and recovery efforts

Auckland CDEM Key Strategies

- Understand, communicate, and where practical, reduce the risk of hazardous impacts to Auckland
- Build individual, community and business resilience against the disruption caused by the impact of a hazard
- Early warning or forecast of threats
- Public Alerting of imminent threats
- Maintain 24/7 CDEM Operational Readiness
- Respond and Recover from emergencies

Auckland CDEM Activations

Exercises (x5)

- “Prove it” / National tsunami “Tangaroa” / Christmas readiness (x2) / International tsunami “Pacific Wave”

Support (x3)

- September Christchurch Earthquake / Drought / Rena Grounding

Crisis Management (x5)

- Heritage “Palace Hotel” demolition / Watercare Gas explosion / Rugby World Cup / Maui Gas pipeline disruption / Three Kings Building

ECC Activations (x11)

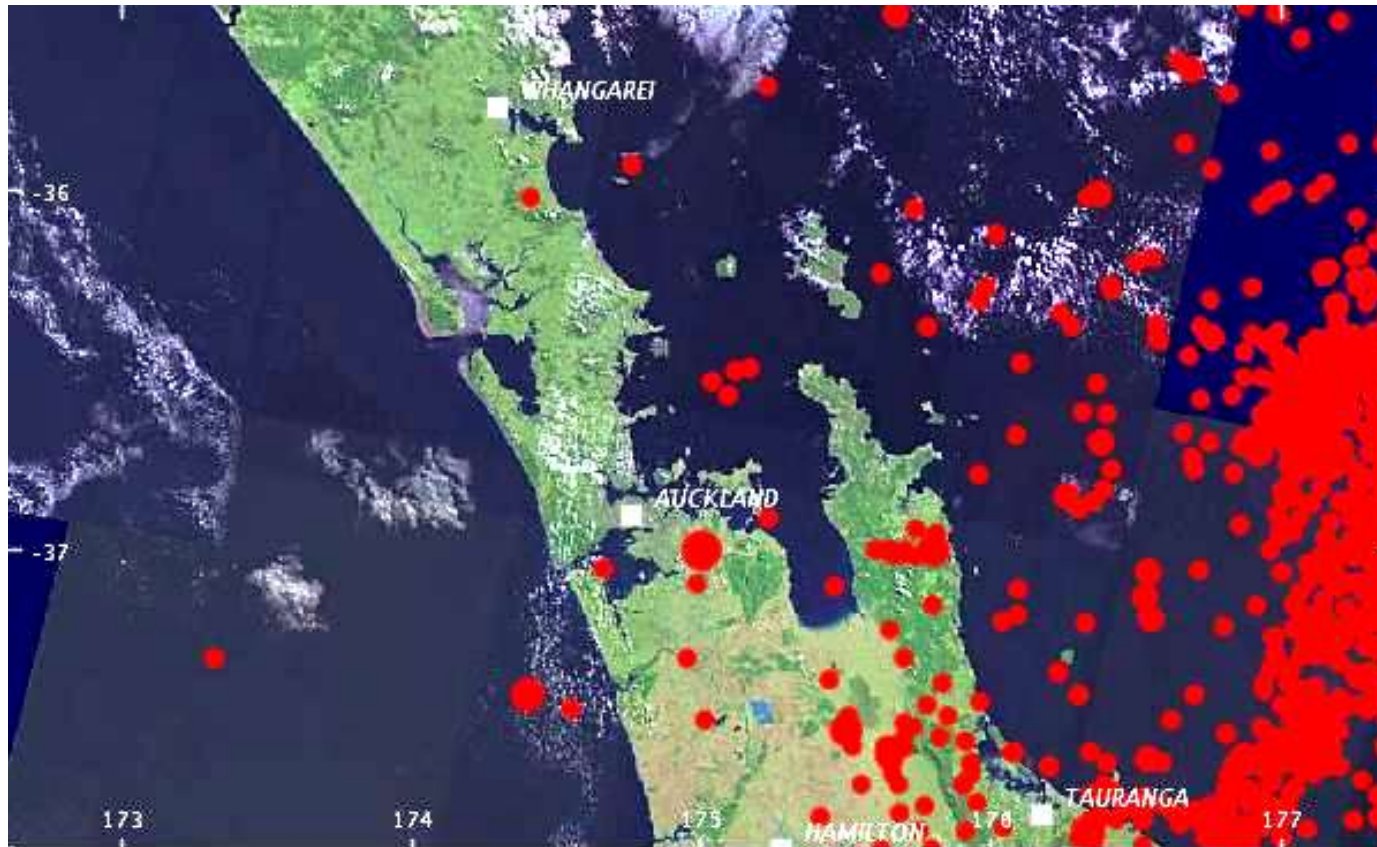
- Cyclones (x2)
- February Christchurch Earthquake
- Tsunami (x3) Japan & Kermadec (x2)
- Tornados (x2) Albany & Avondale
- Thunderstorm Glen Eden

Likelihood of an occurrence in a 50 year period

Tornado	100 %
Tsunami	49 %
Earthquake (MM VII)	7 %
Volcanic eruption	5 %



Earthquakes over the last 200 yrs

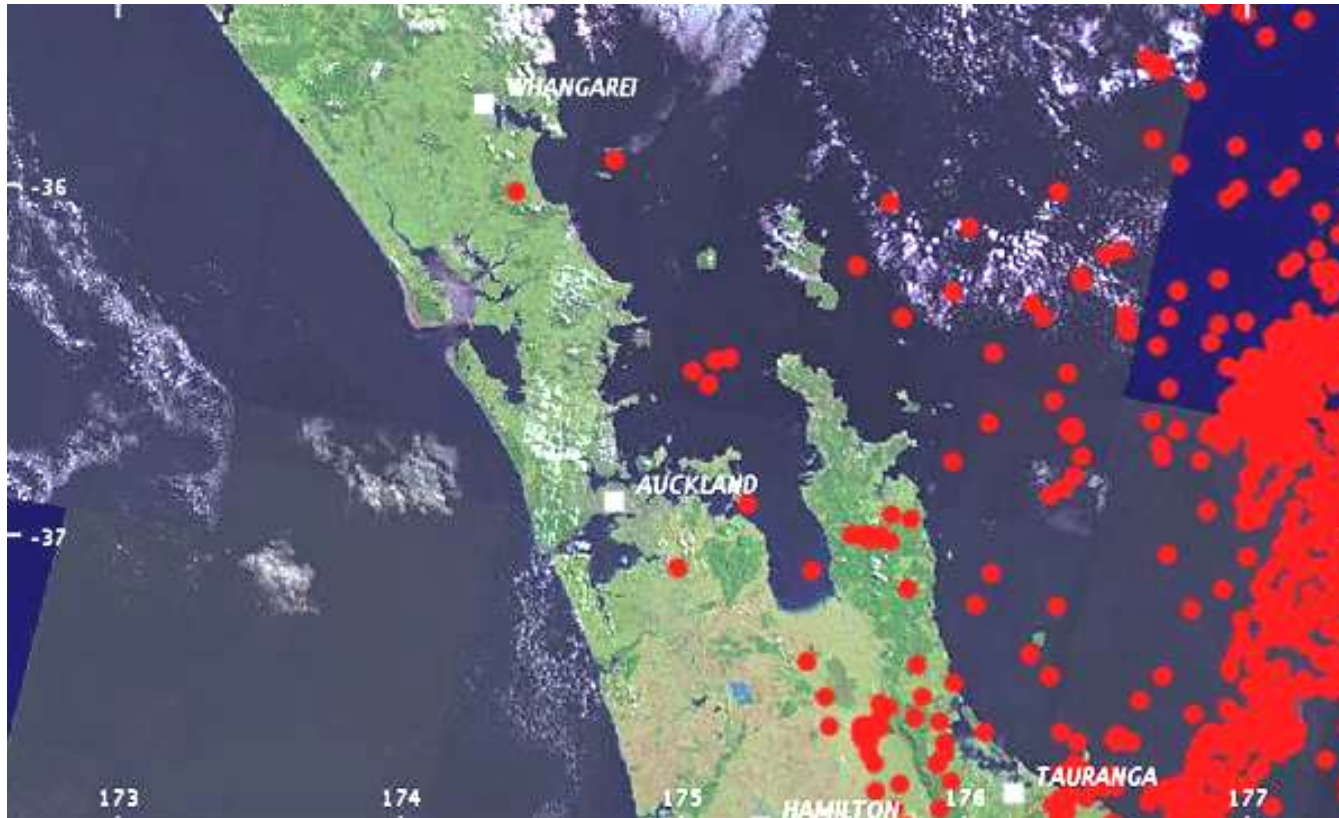


- Magnitude less than 3.9
- Magnitude between 4 and 4.9
- Magnitude between 5 and 5.9
- Magnitude between 6 and 6.9
- Magnitude greater than 7



www.geonet.org.nz

Earthquakes over last 50 years



- Magnitude less than 3.9
- Magnitude between 4 and 4.9
- Magnitude between 5 and 5.9
- Magnitude between 6 and 6.9
- Magnitude greater than 7

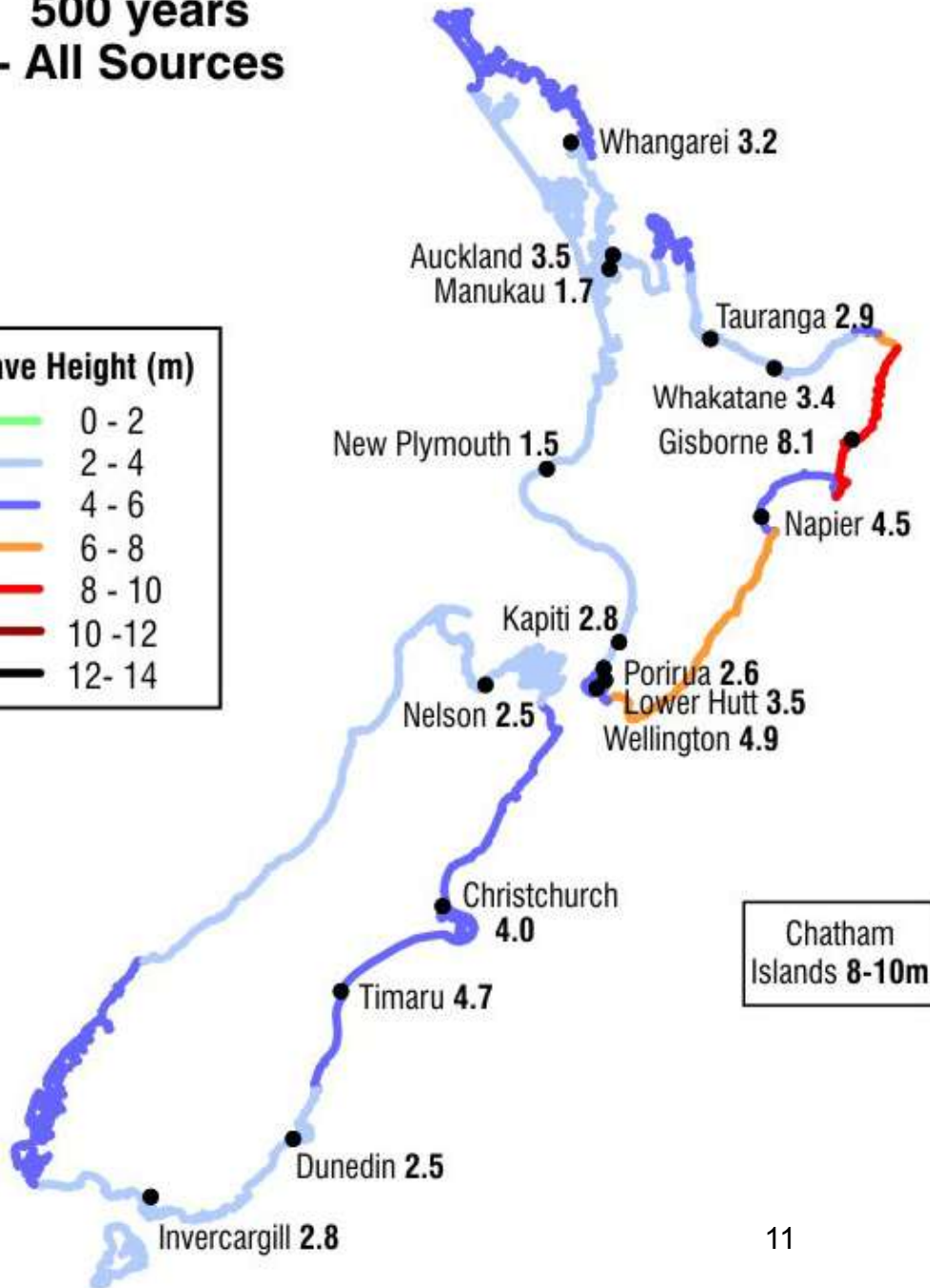
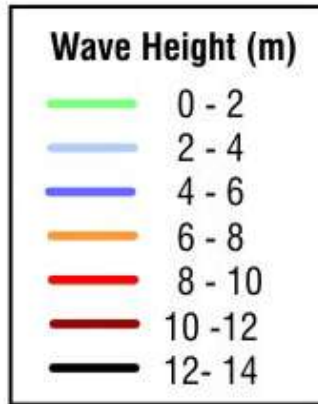


www.geonet.org.nz

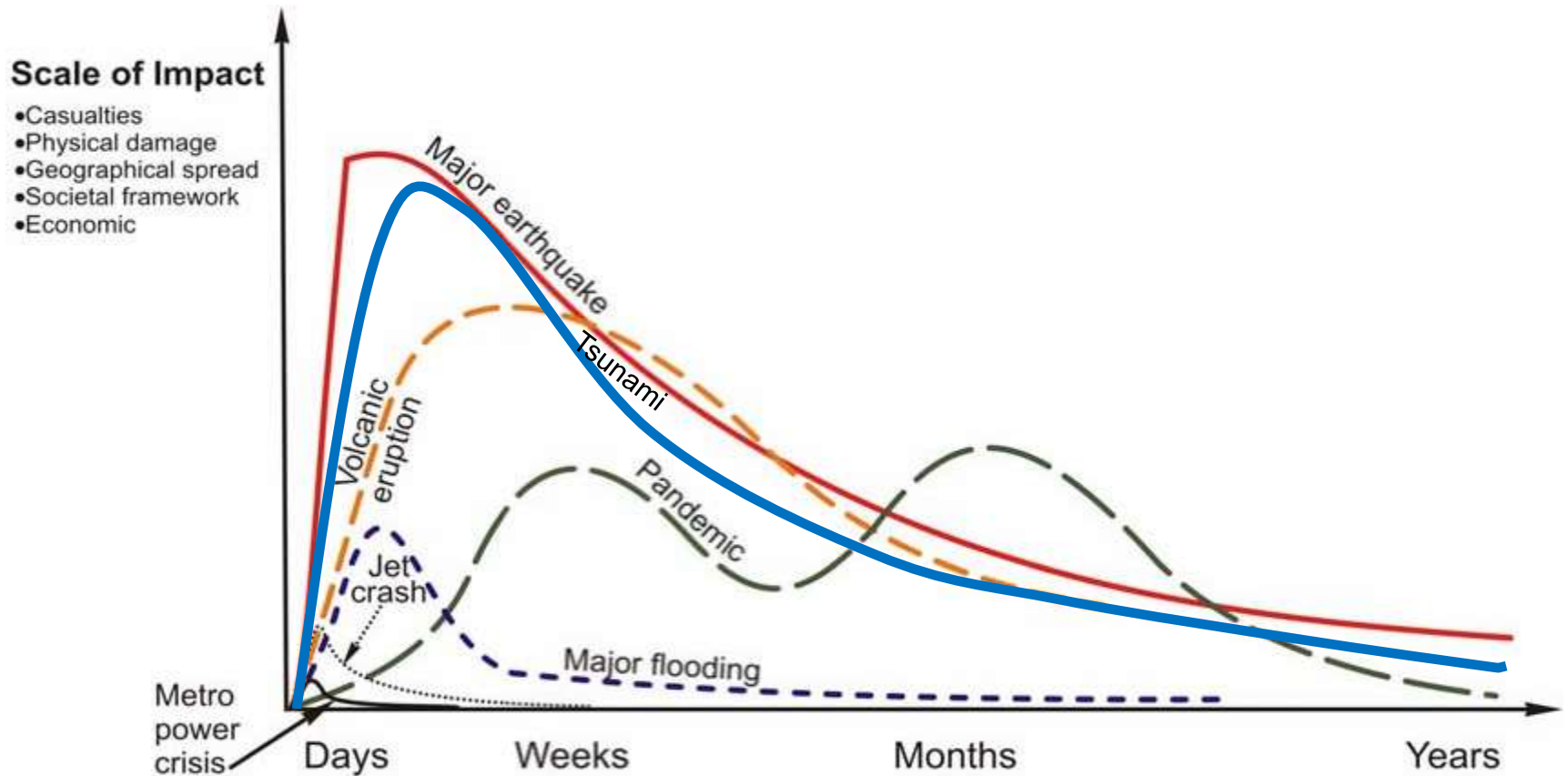
EQ Prone Buildings – Auckland

- Auckland Council Earthquake-Prone, Dangerous and Insanitary Building Policy 2011-2016 adopted November 2011 and covers the entire Auckland Region.
- 1400 Initial Evaluation Procedure (IEP) assessments undertaken.

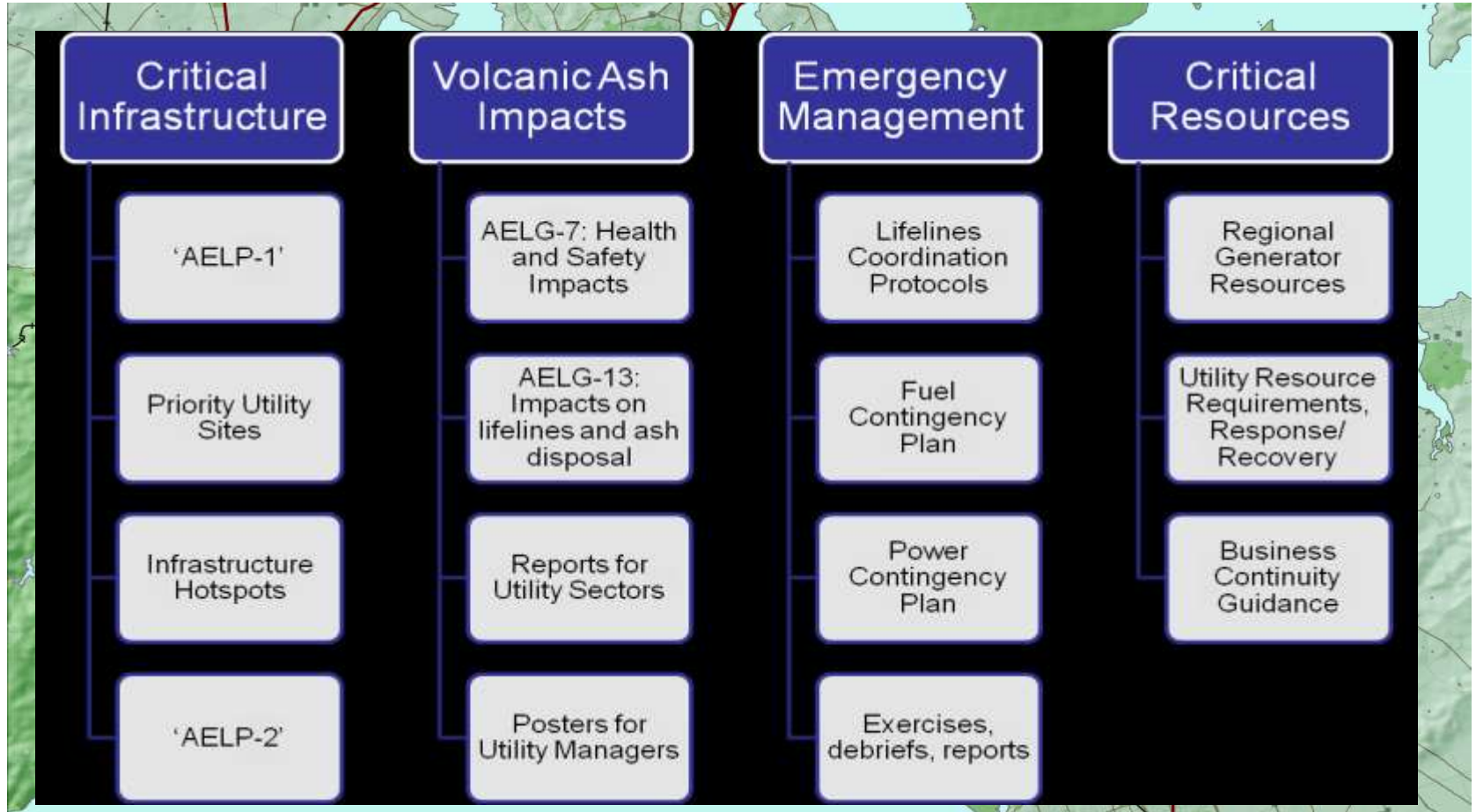
500 years - All Sources



Duration of Effects of Emergencies



Auckland Engineering Lifelines



Observations from recent events

Many lessons identified over a short space of time

Auckland has absorbed this knowledge and has integrated arising actions into the work programme

Observations from recent events

- Importance of developing and maintaining a rapid and sustained common operating picture
- Need to manage / analyse / understand and give meaning to large amounts of information
- Co-ordination and integration of resources from across NZ
- Importance of resilient communities and strong local leadership

Observations from recent events

- Importance of consistent training within the sector and exercising with external partners
- Daily operational processes “Shift Handover” and “Information Transfer”
- Importance of principle of one lead Controller
- Importance of effective relationships and role clarification

Observations from recent events

- Coordinated planning across all sections and agencies
- Strong organisational resilience
- Importance of Exercises and implementation of learnings
- Importance of the Logistics function
- Value of appropriate alternate ECC venues

Joined up 'doing' - Auckland

- Planning for enlarged Emergency Coordination Centres across the region
- Mass Evacuation Planning for Auckland
- Rapid Intel gathering and relevant situation reporting

Enlarged and flexible ECCs

- We have developed a flexible ECC close to Mayor/CEO
- Identified enlarged alternate venues to accommodate governance and ECC activities in different locations across Auckland
- Pre existing arrangements with venue management and governance



Civil Defence
and Emergency Management



**Auckland
Council**

Evacuation Planning

- Generation 2 Plan is under development
- Auckland Civil Defence responsible for facilitating and coordinating the planning process
- Engaging and effective relationships through the planning stages that enable effective liaison and coordination with agencies during response
- Integrated with Neighbourhood response planning

Rapid intel gathering and intel feeds

- Develop a common operating picture as rapidly as possible by as many means as possible
- Maintain reconnaissance proportionate to the scale of the event
- Timely and relevant information to the right agencies / organisations / civic leaders and community
- Harness technology / social media / information aggregation systems



For more information

- aucklandcivildefence.org.nz
- aucklandcouncil.govt.nz
- aelg.org.nz